



LAKE ISLE COUNTRY CLUB

WILMOT ROAD

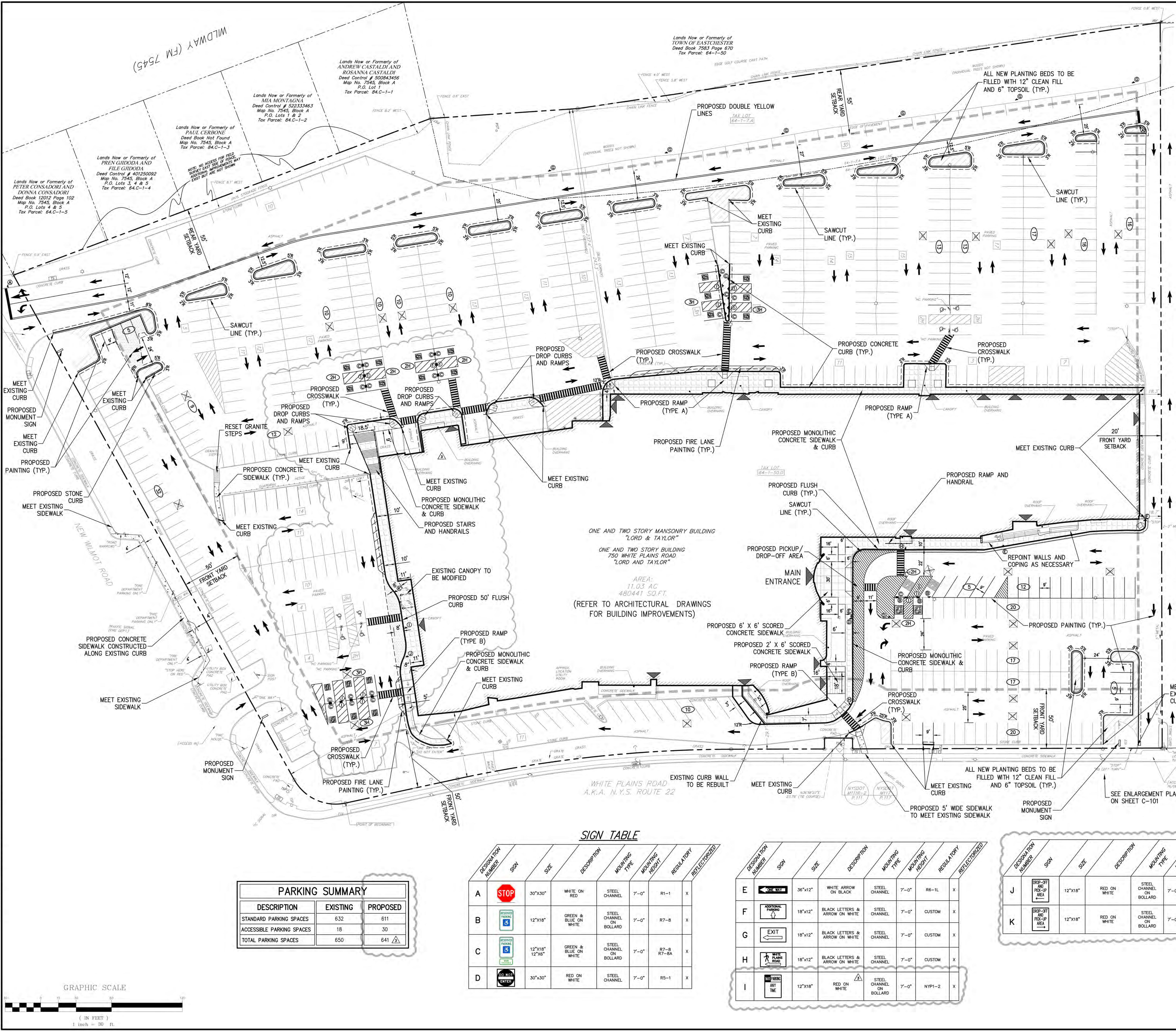
22



leasing@hbc.com

750 White Plains Road, Eastchester, NY





LEGEND

[Symbol]	EXISTING PROPERTY LINE
[Symbol]	ADJACENT PROPERTY LINE
[Symbol]	EXISTING SETBACK LINE
[Symbol]	EXISTING BUILDING OVERHANG
[Symbol]	EXISTING PAVEMENT EDGE
[Symbol]	EXISTING CURB LINE
[Symbol]	EXISTING RETAINING WALL
[Symbol]	EXISTING FENCE
[Symbol]	EXISTING DIRECTIONAL ARROWS
[Symbol]	EXISTING PAINT
[Symbol]	EXISTING PARKING WITH NUMBER OF SPACES
[Symbol]	EXISTING ACCESSIBLE PARKING WITH NUMBER OF SPACES
[Symbol]	EXISTING PEDESTRIAN CROSSING
[Symbol]	EXISTING UTILITY POLE
[Symbol]	EXISTING LIGHT POLE
[Symbol]	EXISTING SIGN
[Symbol]	PROPOSED CONCRETE CURB
[Symbol]	PROPOSED STONE CURB
[Symbol]	PROPOSED DROP CURB & RAMP
[Symbol]	PROPOSED SAWCUT LINE
[Symbol]	PROPOSED ACCESSIBLE PARKING SPACES WITH NUMBER OF SPACES INDICATED (REFER TO STRIPING DETAILS)
[Symbol]	PROPOSED PARKING SPACES WITH NUMBER OF SPACES INDICATED (REFER TO STRIPING DETAILS)
[Symbol]	PROPOSED MONOLITHIC CONCRETE SIDEWALK & CURB
[Symbol]	PROPOSED CONCRETE SIDEWALK
[Symbol]	PROPOSED 12" CLEAN FILL AND 6" TOPSOIL
[Symbol]	PROPOSED ASPHALT PAVEMENT
[Symbol]	PROPOSED RETAINING WALL (DESIGN BY OTHERS)
[Symbol]	PROPOSED 2'-4" WIDE YELLOW LINES @ 0'-0"
[Symbol]	PROPOSED 4" WIDE YELLOW HATCH LINES 18" O.C. @ 45°
[Symbol]	PROPOSED ARROW MARKING ON PAVEMENT
[Symbol]	PROPOSED WORD MARKING ON PAVEMENT
[Symbol]	TRAFFIC SIGN LOCATION & DESIGNATION
[Symbol]	PEDESTRIAN CROSSING
[Symbol]	DOOR LOCATION

- NOTES:**
- EXISTING CONDITIONS DEPICTED ON THIS PLAN HAVE BEEN TAKEN FROM SURVEY TITLED, "EXISTING CONDITIONS SURVEY PREPARED FOR SAKS & COMPANY LLC" PREPARED BY CHAZEN ENGINEERING, LAND SURVEYING & LANDSCAPE ARCHITECTURE, CO., D.P.C., DATED 10/31/2019.
 - ALL EXISTING STONE CURB THAT IS LOOSE SHOULD BE REPAIRED BY THE CONTRACTOR.
 - ANY STONE CURB DISTURBED OR DAMAGED DURING THE CONSTRUCTION SHALL BE REPAIRED BY THE CONTRACTOR.
 - ALL EXISTING PARKING LIGHT POLES TO BE REMOVED WITHOUT DAMAGE TO EXISTING FOOTINGS. CONTRACTOR TO PROVIDE NEW LIGHT POLE AS NOTED ON THE DETAIL SHEET. THE CONTRACTOR SHALL BE RESPONSIBLE FOR COORDINATING BOLT PATTERNS, AND BOLTS FOR NEW LIGHTING AND WIRING PER THE MANUFACTURER'S RECOMMENDATION. ALL CONCRETE FOOTINGS SHALL BE PARSED WHERE THE CONCRETE IS SPALLING AND PAINTED WITH CONCRETE PRIMER AND PAINT (COLOR AS CHOSEN BY OWNER).
 - MONUMENT SIGN LIGHTS SHALL BE UP LIGHTS AS PER THE DETAILS.

PARKING SUMMARY

DESCRIPTION	EXISTING	PROPOSED
STANDARD PARKING SPACES	632	611
ACCESSIBLE PARKING SPACES	18	30
TOTAL PARKING SPACES	650	641

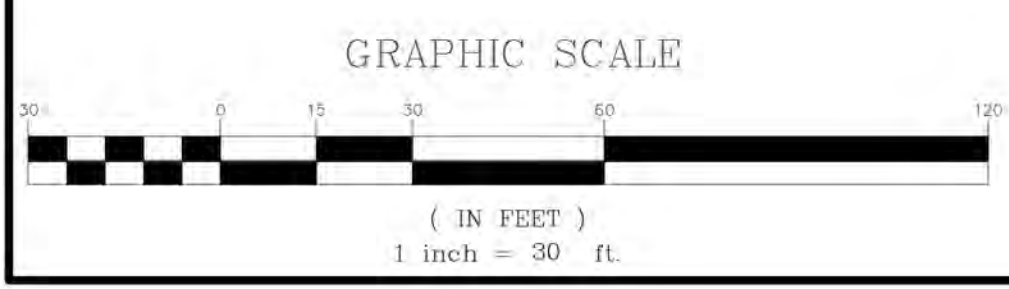
SIGN TABLE

DESCRIPTION NUMBER	SIGN	SIZE	DESCRIPTION	MOUNTING TYPE	MOUNTING HEIGHT	REGULATORY	REFLECTORIZED
A	STOP	30"x30"	WHITE ON RED	STEEL CHANNEL	7'-0"	R1-1	X
B	ADDITIONAL PARKING	12"x18"	GREEN & BLUE ON WHITE	STEEL CHANNEL ON BOLLARD	7'-0"	R7-8	X
C	ADDITIONAL PARKING	12"x18" 12"x6"	GREEN & BLUE ON WHITE	STEEL CHANNEL ON BOLLARD	7'-0"	R7-8 R7-8A	X
D	NO PARKING ANY TIME	30"x30"	RED ON WHITE	STEEL CHANNEL	7'-0"	R5-1	X

DESCRIPTION NUMBER	SIGN	SIZE	DESCRIPTION	MOUNTING TYPE	MOUNTING HEIGHT	REGULATORY	REFLECTORIZED
E	ONE WAY	36"x12"	WHITE ARROW ON BLACK	STEEL CHANNEL	7'-0"	R6-1L	X
F	ADDITIONAL PARKING	18"x12"	BLACK LETTERS & ARROW ON WHITE	STEEL CHANNEL	7'-0"	CUSTOM	X
G	EXIT	18"x12"	BLACK LETTERS & ARROW ON WHITE	STEEL CHANNEL	7'-0"	CUSTOM	X
H	ADDITIONAL PARKING	18"x12"	BLACK LETTERS & ARROW ON WHITE	STEEL CHANNEL	7'-0"	CUSTOM	X
I	NO PARKING ANY TIME	12"x18"	RED ON WHITE	STEEL CHANNEL ON BOLLARD	7'-0"	NYPI-2	X

DESCRIPTION NUMBER	SIGN	SIZE	DESCRIPTION	MOUNTING TYPE	MOUNTING HEIGHT	REGULATORY	REFLECTORIZED
J	STOP-UP AND PICK-UP AREA	12"x18"	RED ON WHITE	STEEL CHANNEL ON BOLLARD	7'-0"	R7-1 (MODIFIED)	X
K	STOP-UP AND PICK-UP AREA	12"x18"	RED ON WHITE	STEEL CHANNEL ON BOLLARD	7'-0"	R7-1 (MODIFIED)	X

ANY ALTERATION OF PLANS, SPECIFICATIONS, PLATS AND REPORTS BEARING THE SEAL OF A LICENSED PROFESSIONAL ENGINEER OR LICENSED LAND SURVEYOR IS A VIOLATION OF SECTION 7209 OF THE NEW YORK STATE EDUCATION LAW, EXCEPT AS PROVIDED FOR BY SECTION 7209, SUBSECTION 2.



By	CS	10/07/2021
Date	EL	03/03/2022
Revision	EOK	06/03/2022
	EOK	08/16/2022

APPLICANT: **STREET-WORKS DEVELOPMENT LLC**
 225 LIBERTY STREET - 31ST FLOOR
 NEW YORK, NY 10281
 ARCHITECT: **DESIGN DEVELOPMENT, PLLC**
 165 MANHATTAN AVENUE, FLOOR 2
 WHITE PLAINS, NY 10601

JMC
 JMC Planning, Engineering, Landscape Architecture & Land Surveying, PLLC
 JMC Site Development Consultants, LLC
 John Meyer Consulting, Inc.
 120 BEDFORD ROAD - ARMONK, NY 10504
 voice 914.273.8225 • fax 914.273.2102
 www.jmcplic.com

SITE LAYOUT PLAN
LORD & TAYLOR EASTCHESTER
 750 WHITE PLAINS ROAD
 SCARSDALE, NY 10583

Drawn: CDF Approval: DV
 Scale: 1" = 30'
 Date: 05/11/2021
 Project No: 18150-17
 Web-IP-LAY1 LAY
 Drawing No: **C-100**